

From Edge to Cloud

Unlock your healthcare potential with HPE GreenLake

Despite many UK healthcare organisations and other public sector organisations embracing public cloud to enable digital transformation, over 70% of ICT is estimated to remain on-premises.

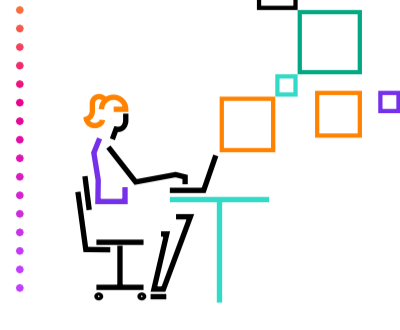
Many critical services deployed in the public cloud remain dependent on legacy ICT systems to deliver an end-to-end service. Data sovereignty, data gravity, compliance and security remain key priorities in healthcare organisations' digital strategies, and a 'lift-and-shift to the cloud' approach often does not achieve the desired outcomes.



70%
of infrastructure
and
73%
of data remain
on-premises¹

50%

of enterprise-managed data will be created and processed at the edge by the year 2025²



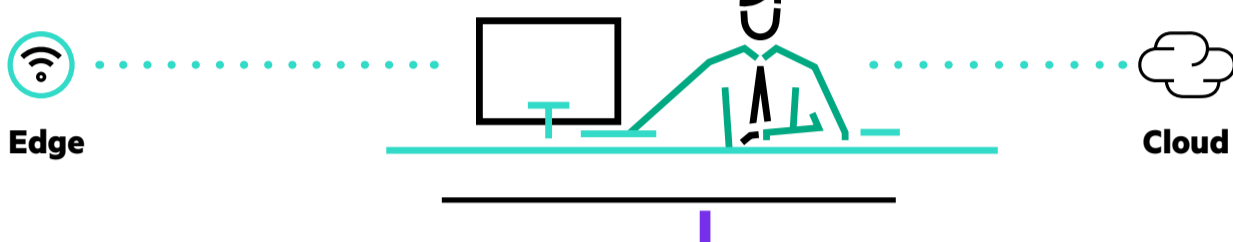
As a result, organisations end up with an unplanned hybrid infrastructure that is difficult (and expensive) to manage and also potentially insecure. This is called an 'unconsciously hybrid' approach. With the proliferation of IoT and edge technologies, a different, integrated approach is required.

We call it 'Consciously Hybrid'.

The HPE **consciously hybrid** approach aims to provide a seamless and flexible approach to hybrid cloud by integrating and managing various platforms from edge to cloud. HPE GreenLake unlocks the full power of your hybrid cloud to drive innovation and efficiency in your healthcare organisation.

By integrating low-cost, easy-to-implement cloud services with existing internal IT systems and private clouds, healthcare organisations can streamline operations internally while enhancing app development using AI, ML and analytics in various ways.

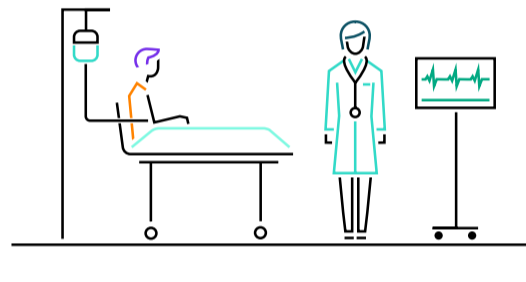
78%
of public service organisations state they have services that are unsuitable for public cloud migration³



HPE GreenLake is an open and secure edge-to-cloud platform that powers data-first modernisation. It gives you a unified cloud experience that speeds up and simplifies operations across your hybrid cloud estate.

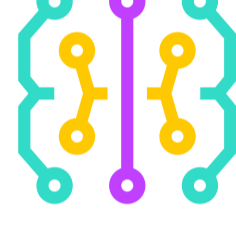
With the HPE GreenLake edge-to-cloud platform, healthcare organisations can:

Personalise doctor and patient experiences



- Remote patient monitoring and telehealth
- Patient engagement
- Fall prevention
- Smart POC testing
- Operating theatre optimisation
- Medical image analysis
- Wellness and health maintenance
- Virus location and tracking
- Clinical insight sharing

Leverage AI for clinical outcomes and efficiencies



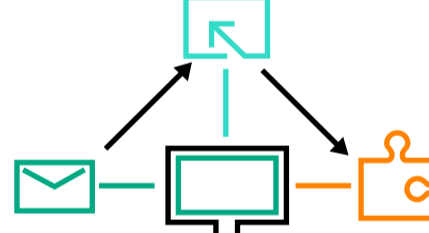
- Imaging and diagnostics
- Operating room workflow automation
- Surgery analytics
- Contactless control
- Unlocking valuable data in isolated legacy systems
- Automating hospital management functions
- Resource management
- Compliance

Ensure security and privacy



- Build a secure infrastructure with an encrypted root of trust
- Protect the infrastructure with access control and threat-detection measures
- Proactively detect threats with artificial intelligence and machine learning
- Provide backup and rapid recovery options in the event of a disaster
- Help with the safe decommissioning or redeployment of IT assets, when necessary

Simplify operations and modernise multi-gen IT



- Modernisation without large capital outlay
- On-premises and cloud data sources, types and locations unified into a single logical backbone
- Predict and resolve issues that may have an impact on system availability
- Manage fluctuating workload demands by paying only for the resources you consume and growing to what you need
- Handle both steady growth and unexpected spikes in demand with on-demand buffer capacity, helping finite resources extend further

HPE GreenLake delivers

- Cloud-like economics
- Complete hybrid cloud operating model across all workloads and data
- Central platform across edges, data centres, colocations and public clouds
- Flexibility and scalability, with pay-per-use financing
- Managed for you, improved IT resource efficiency
- Protection and connection of your facility's data
- Reduced latency
- Ease of moving your data without penalties
- Data sources, types and locations which are unified into a single logical hybrid data backbone

¹⁻² UK Public Sector Cloud strategy report: Research conducted by Dark Matter Media Ltd through a Freedom of Information request to 400 public sector organisations in May-July 2021

³ Predicts 2022: The Distributed Enterprise Drives Computing to the Edge, October 20, 2021. Gartner – Bob Bill and Tom Bittman – ID G00757917

Always Innovative. Always Intelligent. HPE GreenLake for Healthcare.

Learn more at
hpe.com/uk/en/solutions/public-sector-industries